



**WORLD FEDERATION
OF NEUROLOGY**

<https://wfneurology.org>



WORLD FEDERATION
OF NEUROLOGY

Wolfgang Grisold, Austria

No: COI



EDITORS' CHOICES
Click here to access

WORLD NEUROLOGY
JOURNAL OF THE
NEUROLOGICAL SCIENCES

eNS
eNeurologicalSci

Navigation arrows: left arrow on the left, right arrow on the right.



192

Welcome message from Prof Willem G. Kruit, WFN President



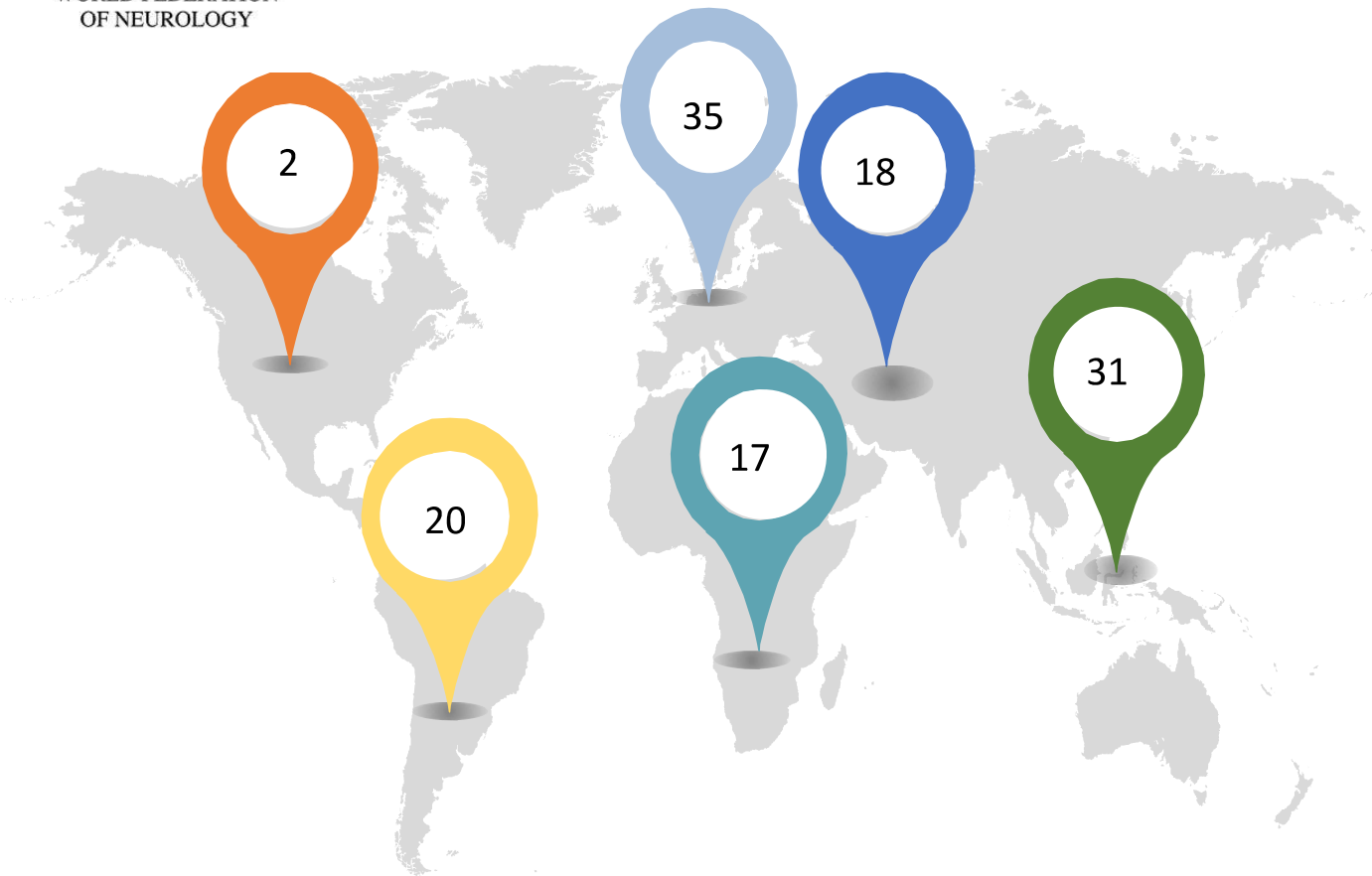
WORLD FEDERATION
OF NEUROLOGY

Fostering quality neurology and brain health worldwide



WORLD FEDERATION
OF NEUROLOGY

WFN Members, BY REGION



North
American



Latin America



Europe



Pan Africa



Pan- Arab

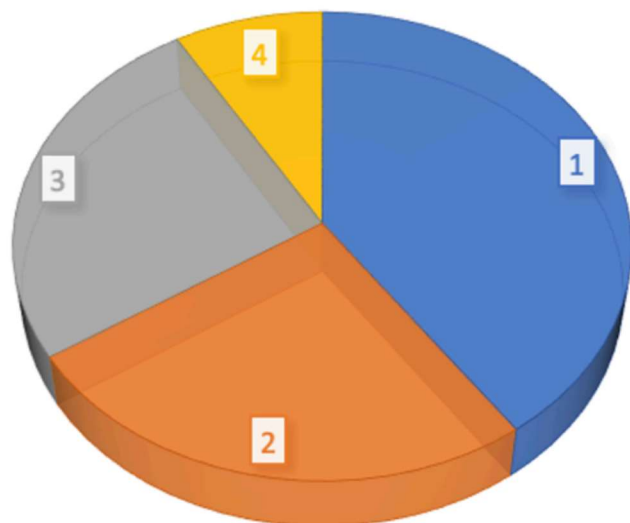


Asian-
Oceania



Distribution of members by income Relation of incomes per capita

WFN Members; distribution



10 % of per head

income for the
health
budget (\$)

103

404

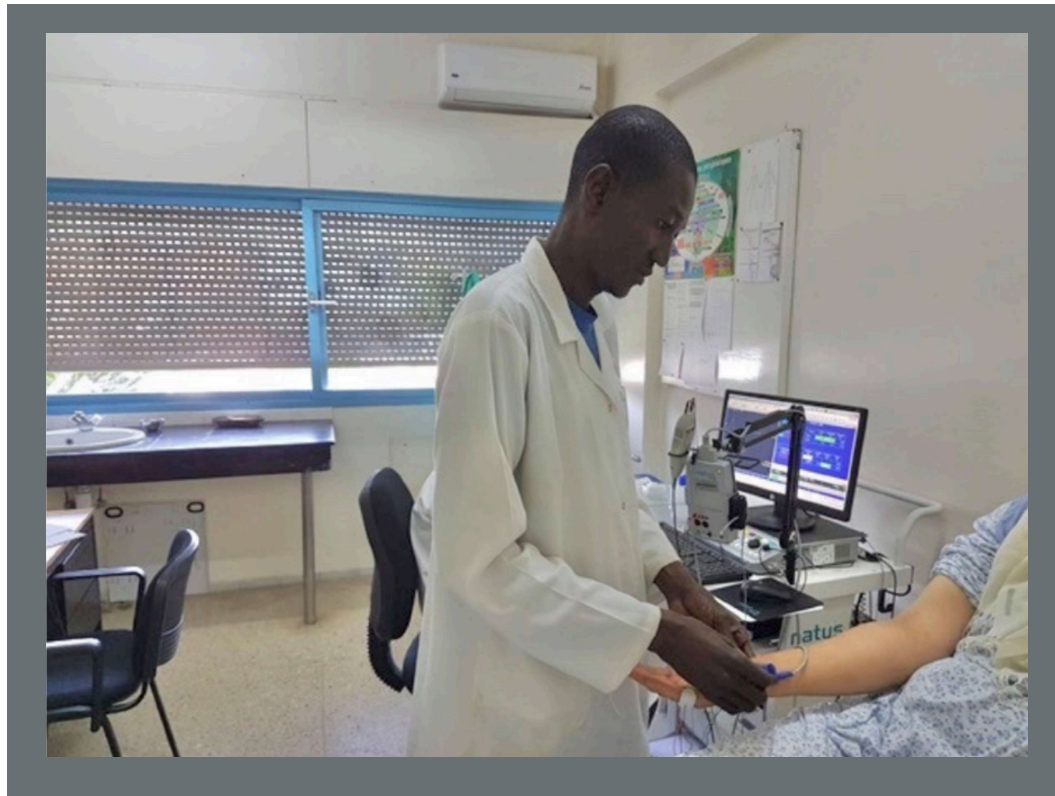
1200

3000 - 10000

| Income countries | Per capita income US \$ |
|-----------------------|--|
| 1 High income | 12,536 or more . Calculated 30 000 (Range 13 - 150 k)) |
| 2 Upper middle income | 4,046 and 12,535 |
| 3 Lower middle income | 1036-4045 |
| 4 Low income | 1035 |



WORLD FEDERATION
OF NEUROLOGY



www.wfneurology.org

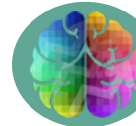
WFN -Education



Training Centres



Department Visit Programme



Continuum



E learning, Edu days



JTF, Grants, Congress bursaries



WFN Training Centres

 WFN currently has five training centres.

Africa

- **Dakar, Senegal**
- **Rabat, Morocco**
- **Cape Town, South Africa**
- **Cairo, Egypt**

North America

- **Mexico City**



WORLD FEDERATION
OF NEUROLOGY

WFN/E Learning Hub-LEARNING DAYS



WCN Congresses and Congresses of SG



WFN

Activities

News & Events



5 DAYS OF

- ✓ Workshops
- ✓ Teaching Courses
- ✓ Industry-Supported Seminars
- ✓ Scientific Sessions
- ✓ Plenary Sessions
- ✓ Poster Presentations
- ✓ Networking Opportunities



ICNMD 2022
17TH INTERNATIONAL CONGRESS
ON NEUROMUSCULAR DISEASES

5 - 9 July 2022
Brussels, Belgium



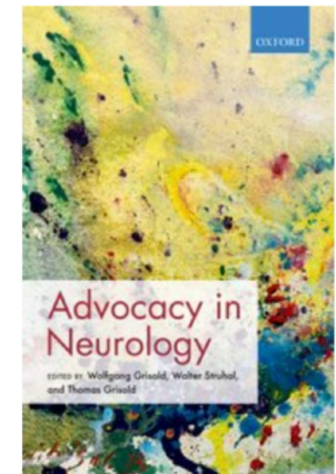
ICNMD.ORG | #ICNMD2022



Advocacy Activities

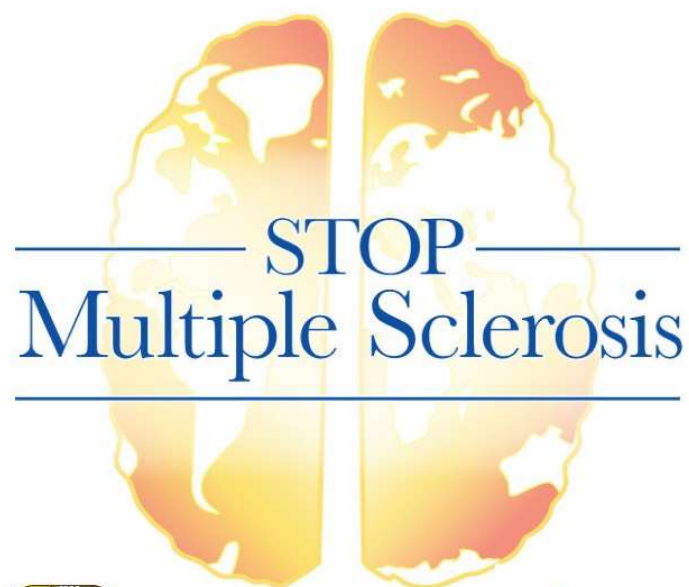
- NSA
- IGAP Epilepsy - Global Action Plan
- Neurocovid groups

- ICD-11 - Topic Advisory Group in Neurology (Change in designation of stroke)
- Neurological Needs Registry
- Atlas I and II





WORLD BRAIN DAY



WORLD BRAIN DAY 2021

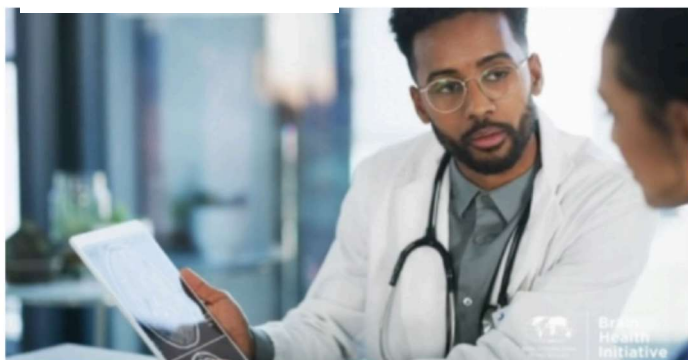
On July 22, 2021, we will work together to stop MS by diagnosing earlier, providing better access to life-changing treatments, and advocating for improved quality of life for those living with MS and their caregivers.

Join us as we stop multiple sclerosis.



Brain Health Initiative

The Vitals: What to Know About Brain Health



1. Introduction to Brain Health

11 Jan 2021

Brain health is a critical piece of your overall health. It underlies your ability to communicate, make decisions, problem-solve and live a productive and useful life. Because the brain controls so much of daily function, it is arguably the single most valuable organ in the human body.

[Read more >](#)



2. What Happens When Brains are Not Healthy

11 Jan 2021

When our brains aren't healthy, our bodies and lives are impacted. The brain controls our thoughts, speech, memory and emotions and determines our personality, judgment and sociability. It controls the movement of our bodies, including the complicated systems we rely on to breathe, digest, circulate blood, fight infection and more.

[Read more >](#)



WFN Webinar to Launch Brain Health Initiative

17 Feb 2021

The World Federation of Neurology proudly announces their Brain Health Initiative. Hear from WFN regional organisation presidents about the importance of the initiative and learn about the challenges their regions are facing in this educational webinar.

[Read more >](#)



WBD 2022

Brain Health

Across the WFN regions

**Prevention-Function-Diagnosis-Therapy-
Rehabilitation**

During the Life span

Equity

Access to care



WORLD FEDERATION
OF NEUROLOGY

Publications and Social Media

VOL. 35 - NO.4 - OCTOBER-NOVEMBER 2020



THE OFFICIAL NEWSLETTER OF THE WORLD FEDERATION OF NEUROLOGY

Simplifying the Diagnostic Criteria for ALS

New Criteria are Aimed to Facilitate Enrollment of Patients into Clinical Trials

BY ANTHONY BURNETT FOR THE ALS FOUNDATION



Matthew Kiernan, Chair of the ALSND Speciality Group, World Federation of Neurology, ICS Consensus Committee, Amruth A Chhabil (London, UK), Marc Baker (Sheffield Hallam Univ, UK), David Butler (Sydney, Australia), Li Ting Gu (Beijing, China), Marlene de Carvalho e Silva (Paris, France), Andrew Stone (Toronto, Canada), John Granata (Sydney, Australia), Cui Jianhua (Beijing, China), Joseph Robert Henderson (Bristol, UK), Masahito Hara (Tokyo, Japan), Matthew Harrison (Sydney, Australia), Jose Manuel Matute Marin (Sevilla, Spain), Hideo Mizumura (Itoya, Japan), and Shiroko Morino (Tokyo, Japan).

PRESIDENT'S COLUMN

Becoming Acquainted With the Pandemic

WILLIAM CAMPBELL, MD

As the days in which of world knowledge in medicine, we'll have been more than right records over the world and we have to deal with COVID-19. In these times, our lives and practices have changed dramatically. We'll be discussing, read, meetings, and educational activities have moved on to adapt to what is effectively a new world. In some

incidents, the problems in facing again, resulting in death, disability, and the consumption and resources of resources. In others, populations are virtually self-healed. In some, it is a recession in learning to see and respond to the needs of those of our colleagues in local, national, and international levels and learning to record

data, results, and long-term effects of COVID-19. Groups such as the European Academy of Neurology, ICS Consensus Committee (EPICURE), the World Health Organization's New COVID-19 Task Force, and the COVID-19 Research Coalition are all actively involved in developing guidelines and strategies to facilitate the progress of neurological conditions in the pandemic. In many instances, clinicians, public health

—PUBLISHER'S EDITOR

INSIDE

THE WFN COMMITTEES AND SPECIALTY GROUPS PAGE 3

INTERNATIONAL NEWSBRIEF OF EXPERTS IN CLINICAL NEUROPHYSIOLOGY PAGE 4


WFN NEUROINFECTION SERIES: A SUCCESS STORY CONTINUES PAGE 5

Volume 357 16 August 2018 ISSN: 0022-5128



JOURNAL OF THE NEUROLOGICAL SCIENCES

OFFICIAL JOURNAL OF THE WORLD FEDERATION OF NEUROLOGY



eNS

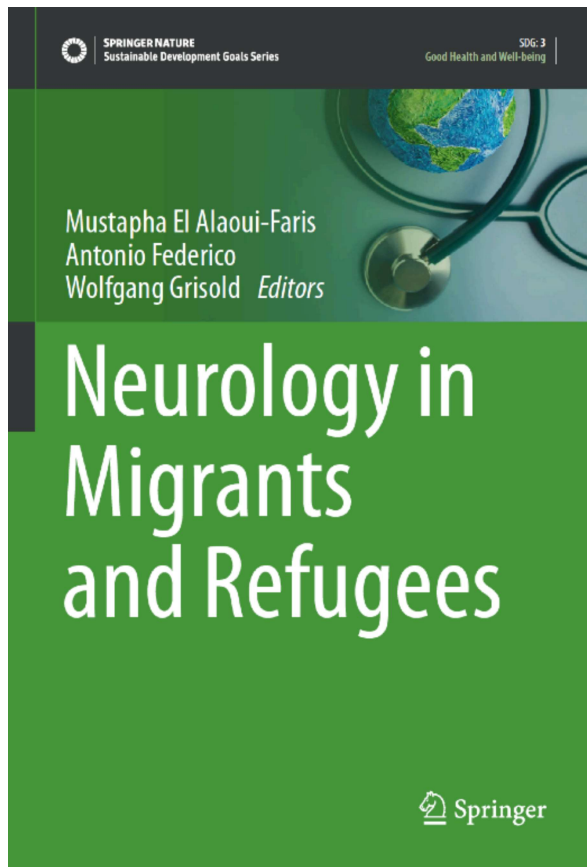
eNeurologicalSci

Special Issue: Neurological Disorders in Aging
Guest Editors: Massimo Pavesi, Anna Maria Paganoni and Emiliano Ghisleni

OFFICIAL JOURNAL OF THE WORLD FEDERATION OF NEUROLOGY

WFN Migrant Neurology Speciality Group

Chair: Şerefnur Öztürk



26. Palliative Care in Migrants

pp: 324-331

Grisold W, Grisold S

1 Ludwig Boltzmann Institute for Experimental und Clinical
Traumatology

Donaueschingenstraße 13
A-1200 Vienna, Austria
World federation of Neurology

2 PSD (Psychosocial Services) Vienna, Austria

What is a Migrant? Definitions

- Migrants
- Refugees
- Displaced
- Stateless



The [UN Migration Agency](#) (IOM) [defines a migrant](#) as any person who is moving or has moved across an international border or within a State away from his/her habitual place of residence, regardless of (1) the person's legal status; (2) whether the movement is voluntary or involuntary; (3) what the causes for the movement are; or (4) what the length of the stay is.

Migration & Displacement by Numbers

270 Million
People

Living outside their
country of origin

48 Million
People

Are internally
Displaced

4.2 Million
People

Stateless or at risk of
statelessness

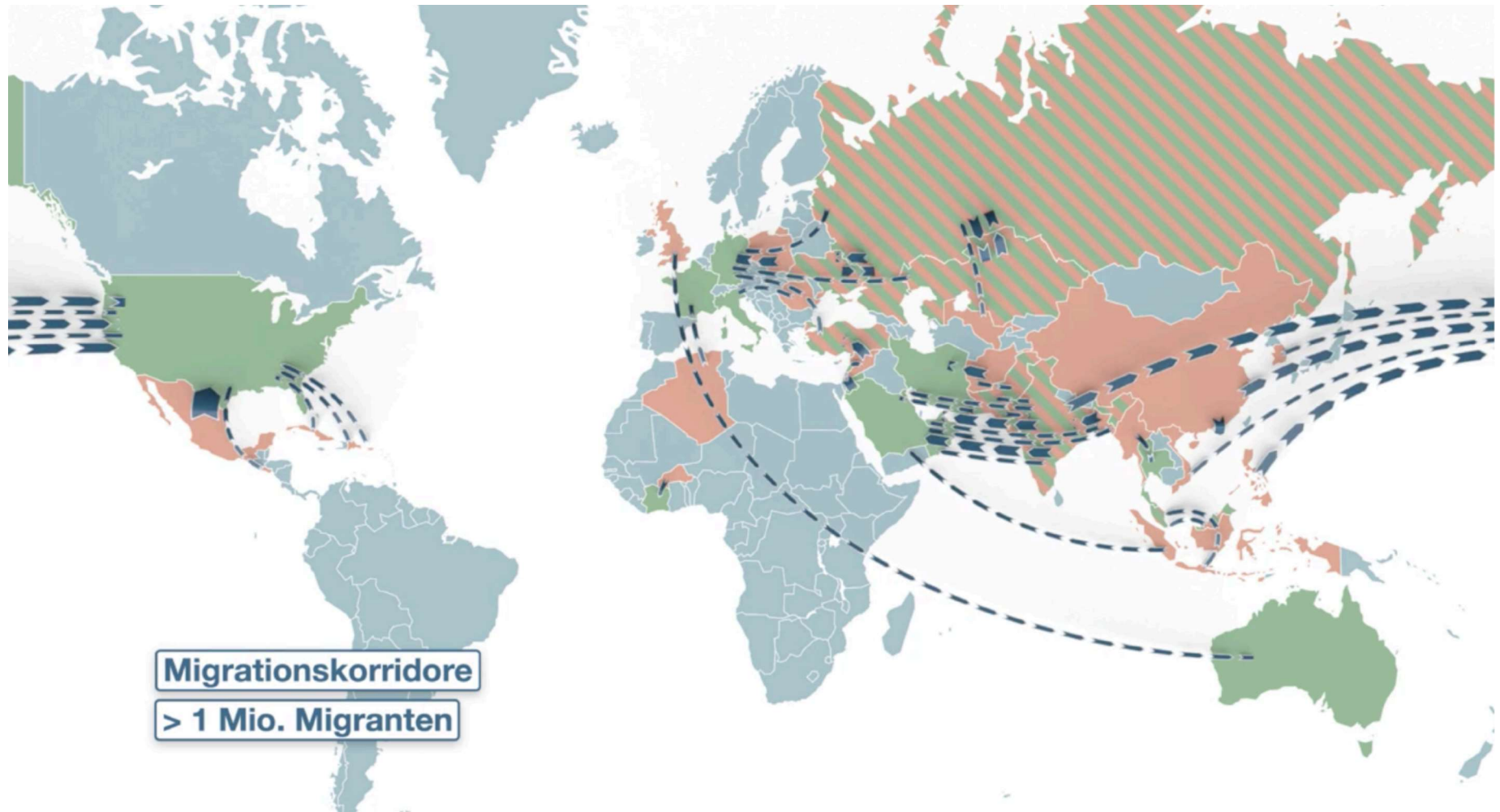
2/3

Of people displaced
across borders are
from 5 countries



Source UN

WW Migrant Streams





WORLD FEDERATION
OF NEUROLOGY

78%
of adults

in need of palliative care live in low- and middle-
income countries

